

The **33**rd International Geographical Congress

21-25 August 2016 Beijing China



SECOND CIRCULAR

www.igc2016.org

CONTENTS

INVITATIONS	3
CONCEPT	4
PROGRAMME	5
THE IGC 2016: TWO PILLARS	5
COMMISSIONS	6
JOINT-COMMISSIONS	12
CALL FOR PAPERS & POSTERS	15
FORUM	15
SYMPOSIA	15
WORKSHOPS	16
SOCIAL EVENTS AND SCIENTIFIC FIELD EXCURSIONS	17
SOCIAL EVENTS	17
SCIENTIFIC FIELD EXCURSIONS	17
REGISTRATION	17
GENERAL INFORMATION AND ACCOMODATION	19
CONGRESS VENUE: CHINA NATIONAL CONVENTION CENTER (CNCC)	19
BEIJING TRANSPORT	20
PASSPORTS AND VISAS	22
WEATHER	23
INSURANCE	23
EMERGENCY	23
CURRENCY EXCHANGE	23
LOCAL TIME	23
ELECTRIC POWER	23
RECONFIRMATION OF AIR TICKET	24
ACCOMADATION	24
IMPORTANT DATES	27
LOCAL ORGNISING COMMITTEE	27
LOCAL SCIENTIFIC COMMITTEE	27
CONTACTS	27

INVITATIONS

Dear Colleagues,

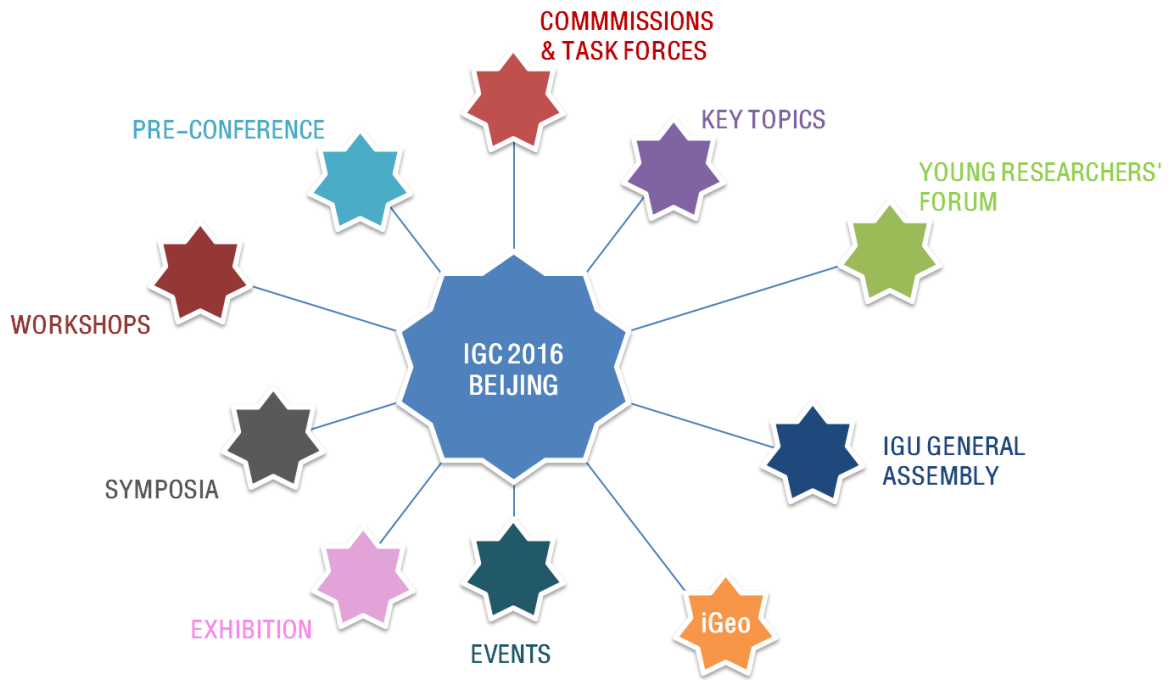
On behalf of the Geographical Society of China and the Local Organizing Committee, we most cordially invite you to participate in the 33rd International Geographical Congress, to be held in Beijing, P. R. China on August 21-25, 2016.

The theme of the 2016 Congress is Shaping Our Harmonious Worlds, which highlights today's common pursuit for harmony between humankind and nature, between environment and society, and for harmonious approaches to the world's hazards and conflicts. Under this theme, five Congress key topics will be focused, parallel to the quadrennial meeting of the IGU commissions and task forces. In addition to academic sessions and activities, a rich variety of social events and field excursions will be organized to provide participants chances to network and to appreciate some of the unique natural features and cultural traditions of this ancient and modern country.

The Geographical Society of China and the Local Organizing Committee will make every effort to offer an attractive environment for communication and networking among geographers all over the world. We hope you will join the 33rd International Geographical Congress and look forward to welcoming you here in Beijing in 2016!

**Yanhua LIU and Bojie FU,
Chairs of the Organizing Committee**

CONCEPT



PROGRAMME

	Week before	Sunday 8.21	Monday 8.22	Tuesday 8.23	Wednesday 8.24	Thursday					
8:00-9:30	Pre-Conferences, iGeo	Register and Check in	Opening Ceremony	Commissions	Key Topic Papers	Symposia	Commissions	Key Topic Papers	Commissions		
10:00-11:30				Plenary Keynotes							
11:45-13:00				Lunch							
13:00-14:00											
14:00-15:20			Commissions & General Assembly	Key Topic Papers	Symposia	Commissions & General Assembly	Key Topic Papers & Poster Sessions	Symposia	Commissions & General Assembly	Key Topic Papers & Poster Sessions	Closing Ceremony
15:30-16:50											
17:00-18:20											
18:30-20:00			Welcome Reception	Break							
After 20:00				Social Events							

THE IGC 2016: TWO PILLARS

Two pillars of the IGC 2016 refer to the IGU traditional quadrennial meeting of commissions and the sessions, papers and posters openly called for under the five key topics, revolving around the congress theme: shaping our harmonious worlds.

PILLAR A: COMMISSIONS

The 41 Commissions and 1 Task Force represent the cutting edge research interest of the global geographical community and their mandates can be renewed every four years by the General Assembly. The General Assembly meets several times during the IGC.

Commission sessions cover a variety of subjects, from physical to human, from specific regional geographies to general discussions on current directions in geographical research. The Commissions are responsible for choosing the foci of and selecting the speakers for these sessions.

The international Geographical Olympiad (iGeo) is a special event organized by the Task Force

"Olympiad" together with the Local Organizing Committee of the IGC 2016. The iGeo will take place in Beijing a few days prior to the IGC 2016.

PILLAR B: KEY TOPICS

In the second pillar of the IGC 2016 poster and paper sessions are related to the following five key topics: geographical science and future earth, globalization and global understanding, urbanization and sustainable development, environment-health and social welfare, and geography in different cultures. For each of these key topics, two prominent persons will be invited to give keynote lectures. At the opening ceremony, four of the ten internationally known persons from politics or science, or geographers will deliver speeches entitled 'Ideas of Harmony - a Historic and Geographic Perspective', 'Environment Evolution and Anthropocene - Science and Policy', 'Geopolitics and Global Security - Understanding and Compromise', 'Future Earth - Innovation, Development and Sustainability' respectively, while the others will speak at the plenary sessions before the lunch break of the subsequent days.

COMMISSIONS

The following sessions have been registered until 31 July 2015 (cf. website for current updates):

C01 APPLIED GEOGRAPHY

- Applied Cultural and Social Geography

C02 ARID LANDS, HUMAN KIND AND ENVIRONMENT

- Sustainable Development in Arid Lands
- Water Crises in Arid Environment
- Sand Dunes and Sand Encroachment
- Evidences of Paleo Climatic Changes in Arid Areas
- Compact of Climatic Changes in Arid Lands
- Hazards and Risks in Arid Environments
- Geoarchaeology in Desert Areas
- Diseases in Arid Environment
- Political Problems in Arid Areas

C03 BIOGEOGRAPHY AND BIODIVERSITY

- Response of Mountain Ecosystems to Climate Change
- Conservation of Biodiversity
- Recent Developments and Expansions in Biogeography

C04 CLIMATOLOGY

C05 COASTAL SYSTEMS

- Harmonizing Pacific Coastal Oceans: Sustainability for a Future Earth

C06 COLD REGION ENVIRONMENTS

- Sustainability and Resilience Monitoring in the Arctic

- Land Cover Change and Ecosystem Dynamic in High Mountain Asia
- The International Year of Global Understanding (IYGU) and the Cold Regions

C08 DYNAMICS OF ECONOMIC SPACES

- Rethinking the Dynamics of Economic Spaces: New Themes, New Ideas, and New Approaches
- Placing Finance in Urban and Regional Development
- Foreign Direct Investment and Migration

C09 ENVIRONMENT EVOLUTION

- Environment Evolution and Human Activity in the late Quaternary
- Climate - Vegetation Interaction under Past and Future Climate Conditions
- Prehistoric Human Occupation and Environmental Changes on Tibetan Plateau and Surroundings
- Climate Change and Human-Environment Interaction From Neolithic to Historical Periods

C10 GENDER AND GEOGRAPHY

- MART Babies - SMART Cities: From the intimate body to the Asian city
- Mapping Changing Landscapes of Care in Asia: Towards Gendered Theoretical and Empirical Frameworks
- Gendered Rights: Space, Culture and Society
- Addressing Gendered Insecurities in the Urban Global South
- Gendered Aspects of Migration and Multiculturalism
- Island Bodies
- Doing Feminism in Urban Geography: Interrogating Theory Praxis
- Gender in Regeneration Projects: (Dis) Empowerment? Civil Engagement?
- Dance, Bodies and Embodiment as Constructing Cultures, Economies and the Nation

C11 GEOGRAPHICAL EDUCATION

- Research Which Examines the Value and Values of a Geographical Education
- Research in Ways Geographical Education May Contribute to Sustainability and Environmental Awareness
- Research in Geographical Education, Geo-Spatial Technologies and Information Communication Technologies
- Research on Pedagogy in Geographical Education
- Research on Comparative Standards and National Curricula in International Geographical Education
- Research on the Current Status of Geographical Education across the World – Can Goals and Objectives be Harmonised Internationally?
- Research in the Preparation of Geography Teachers at All Levels, Including Evidence of Their Effect on Affective Goals Such As Shaping a Harmonious World
- Research in the Development and Effects of Curriculum in Geographical Education Addressing Global Geopolitical and Ideological Conflicts: Towards a Harmonious World
- Towards a Harmonious Geographical Education Community: Aspects of Research Conducted

in Geographical Education Not Otherwise Included Above.

- The Roles of the IGU Commission on Geographical Education Now and in the Future

C13 GEOGRAPHY OF GOVERNANCE

- Environmental Governance – Spaces, Actors and Powers
- In Search for More Inclusive Governance
- Citizen E-Participation in Local Governance
- Innovations in Public Sector, Public Administration and Public Services

C14 GEOGRAPHY OF THE GLOBAL INFORMATION SOCIETY

- Information Society and Culture 1
- Information Society and Culture 2
- Information Society and Quality of Life
- ICT and Media/Cultural Industries
- Green Economics and Smart Cities

C15 GEOGRAPHY OF TOURISM, LEISURE, AND GLOBAL CHANGE

- Tourism and Empowerment Issues in Traditional Communities
- Tourism and Violence
- Tourism, Heritage And Globalization
- Urban Tourism and Tourism Urbanization
- Lifestyle Mobility and The Local Community
- Tourism and Carbon Emission
- Tourism Planning and Destination Sustainability
- Tourism, Environmental Change and Sustainability
- Nature-based tourism in Asia
- Publishing Tourism Geographies
- Resilience Approaches to Managing Change in Tourism Places
- “Tourism Geographies” in Asia: Contrasting issues, approaches and traditions
- Tourism and Economic Geography
- Tourism and Environment
- ICT and Modern Technology In Tourism
- Tourism and Mobility
- Is Tourism a Help or Hindrance to Global Awareness and Understanding?

C16 GEOPARK

- Geoheritage

C17 GLOBAL CHANGE AND HUMAN MOBILITY

- Moving World, Moving Actors: Global Changes and Personal Challenges
- Information, Communication, New Media, and Human Mobility
- Development Safeguards, Forced Displacement and Resettlement - Inside China and Going Out
- Youth Mobility. An Emerging Phenomenon at the Global Scale

C18 HAZARD AND RISK

- Hazard and Risk
- Participation, Geo-Technology and Risk Governance

C19 HEALTH AND ENVIRONMENT

- Environmental Change and Health
- Health and Health Care
- Health and GIS
- Global Health

C20 HISTORY OF GEOGRAPHY

- Studies in the History of Geography: Past and Present

C22 ISLANDS

- Islands and Future Earth

C23 KARST

- Karst Landscapes: Tourism and Conservation

C24 LAND DEGRADATION AND DESERTIFICATION

- Land Degradation and Environmental Change

C26 LAND USE AND LAND COVER CHANGE

- Comparative Study on Land Cover and Land Use Change (LCLUC) and Their Driving Forces in Different Regions
- Evaluation Of Dominant Trends Of Human Impact On Land Use/Land Cover (LU/LC) Changes As in Multi-Levels (/State as Regional and Local Levels)
- Policies and Economic Conditions Impact on Urban, Agricultural and Forestry Landscapes Change
- Land Use/Land Cover (LU/LC) Change Mapping in Multi-Scales: Data and Methodology
- Land Cover/Land Use Databases and Data Sharing

C27 LATIN AMERICAN STUDIES

- Latin American Geographical Thought
- Environmental Problems, Climate Change and Disaster Risk Management in Latin America
- Geography of Latin American Cities
- Cultural Geography: Heritage, Tourism and Latin American History
- Public Policy and Land Management in Latin America

C28 LOCAL AND REGIONAL DEVELOPMENT

- Local and Regional Development

C29 MARGINALIZATION, GLOBALIZATION, AND REGIONAL AND LOCAL RESPONSES

- Long Forgotten Backward Spaces in the Focus of Global Economy

C30 MEDITERRANEAN BASIN

- The Mediterranean Within Global Contexts

C31 MODELING GEOGRAPHICAL SYSTEMS

- Geocomputation and Modelling of Geographical Systems

C32 MOUNTAIN RESPONSE TO GLOBAL CHANGE

- Mountain Communities in High Asia: Searching For a Position in a Globalized World
- Methodological Development Of Monitoring Studies On Mountain Trial Degradation Under Accelerating Recreational Use

C33 POLITICAL GEOGRAPHY

- Sociocultural Encounters in Geography: Borders, Borderlands, Grassroots Non-State Actors And The Southern African Integration Project
- The Eurasian Pacific – geopolitical moments and unfulfilled promise
- Scales of politics and policies in Latin American borders
- Autochthony, Allochthony and Belonging: Migration, Xenophobia and Social Cohesion in the Southern African Region
- Rethinking Carceral Geography in ‘Harmonised Societies’
- Politics of Environment and People
- The Transformation of Political Space and Prospects for New Governance in the Contemporary Phase of Globalization
- A Reexamination of Militarization and “The Space Of Occupation”: a Comparison Perspective
- Changing Geopolitical Imaginations of Asia
- China’s Geopolitical (Re) Positionings in a Changing World
- China Looks South: Development, Infrastructure and Culture on the Border with Myanmar, Laos and Vietnam
- Postcolonial Literary Geographies

C34 POPULATION GEOGRAPHY

- Migration and Changing Social Worlds in Asia: Negotiating Gender Subjectivities and Family Relations
- Demographic Divide: Coping with Shrinking and Growth
- Processes of Population Change and Migration
- Urbanization and Population Change in China: Parallels and Differences to the Developed World
- Migration and Climate Change an Overview with a Specific Focus on China and Asia

C35 SUSTAINABILITY OF RURAL SYSTEMS

- Globalization and Rural Sustainability
- Environment Change and Migration in the Rural-Urban Interactions
- Land Use and Rural Sustainability

C36 TOPONYMY (JOINTLY WITH INTERNATIONAL CARTOGRAPHIC ASSOCIATION)

- Place Names as Social Constructs

C34 TRANSFORMATION PROCESSES IN MEGACITIES

C38 TRANSPORT AND GEOGRAPHY

- Comparative Air Transport Geographies I: China and Other Bric Countries
- Comparative Air Transport Geographies II: China and Europe/North America
- High-Speed Rail: Accessibility and Regional Development
- Transport and Social Equity
- Smart Cities and Transit Oriented Development
- Transport, Logistics, and Global Consumption Network

C39 URBAN COMMISSION: URBAN CHALLENGES IN A COMPLEX WORLD

- Complex Urban Systems
- New Concepts and Methods in Urban Studies
- Technological Innovations, Creative Activities in Cities, Innovative and Smart Building and Transportation in Cities
- Polycentrism, Small and Medium Size Cities
- Creating Sustainability
- Dilemmas of Aging Cities
- Urban Governance, Planning and Participative Democracy
- Contested Social Spaces
- Increasing Insecurity
- Urban Heritage and Conservation
- China's Great Urban Transformation: Multidisciplinary Research On Urban China

C41 GEOMORPHOLOGY AND SOCIETY

- Geomorphological Hazards For a Sustainable Society
- Geomorphology, Geomorphosites and Landscape

JOINT-COMMISSIONS

C07 & C14 Cultural Approach in Geography / Geography of Global Information Society

- Cultural Geographies of the Digital

C07 & C20 Cultural Approach in Geography /History of Geography

- Geographical Imaginations, Practices and Stories of Finisterrae and Border Spaces

C07 & C39 Cultural Approach in Geography/ Urban Geography

- Cultural Aspects Of Sustainable Urban Development

C10 & C39 Gender and Geography / Urban Geography

- A Woman's Place is in the City!

C17 & C34 Global Change and Human Mobility/ Population Geography

- Demographic Sources And Methodologies To Study Human Mobility

C39 & C17 Urban Geography / Global Change and Human Mobility

- Human Mobility and Urban Vulnerabilities

C33 & C10 Political Geography / Gender and Geography

- Conversations between Gender and Political Geographies Key Concepts, Methods and Themes

C34 & C10 Population/ Gender and Geography

- Understanding Contemporary Dynamics of International Student Mobilities

C25 & C07 Landscape Analysis and Landscape Planning /Cultural Approach in Geography

- Role of Heritage Sites and Cultural Landscapes in Harmonizing the World

C06 & C18 Cold Region Environments / Hazards and Risk

- Cold Socio-ecological Systems Under Hazards and Risks: Harmonious Approaches to Resilience Building

C07 & C14 Cultural Approach in Geography / Geography of the Global Information Society

- Mega Events

KEY TOPICS

GEOGRAPHICAL SCIENCES AND FUTURE EARTH

- China's Changing Food System
- Industrial Dynamics and Regional Industrial Restructuring
- Integrated Modeling of the Human-Nature System Co-Evolution and the Interactions Between Different Components of The Human-Nature System
- Urban Physical Geography: Theory, Practice and Progress
- River Forms in Different Geographic Regions
- Biogeography and Macroecology: Two Lenses of One Telescope
- GIS Data Integration and Harmonization
- Geography and Innovation
- Big Data, Gisciences and Decision-Making
- Ecosystem Diversity and Eco-Civilization
- Research Problems in Arid Lands
- Climate Change and Its Impact on Different Dryland Ecosystems
- Processes of Desertification/Land Degradation and Its Responding To Human Activities & Climatic Change In Arid Lands
- Sustainable Use of Land and Water In Dry Areas
- Desert Environment and Wind Erosion Process (From Blown Sand Physics to Aeolian Geomorphology)

CLIMATE CHANGE AND GLOBAL UNDERSTANDING

- Characteristics of the pressure distribution between Matsumoto lida in central Japan in sunny day
- Research on water scarcity and water allocation for integrated river basin management
- Regional science collaboration on integrated transboundary river basin management - Case on Koshi River basin
- Transboundary Waters - Cooperative transboundary water management
- Theoretical Analysis and Case Studies of Free Economic Zone
- Changing Borderlands between China and mainland Southeast Asia: A Global Perspective
- Climate change and anthropocene
- Geo-political, economic, cultural change and conflicts
- Global observation and world data systems
- Local action and global social governance
- Cryospheric Change and Its Impacts To Sustainability
- Rapid Change and Its Dynamics In Cryosphere During the Last Decade
- The Role Of Snow in Cryospheric Change
- Permafrost Engineering Under A Persistent Warming Climate
- Global Change and Biometeorology

URBANIZATION AND SUSTAINABLE DEVELOPMENT

- Urban Soils
- Arid Lands, Humankind and Environment
- Neo-Liberal Industrialization in South Asia - Geo-Economic Implications on Urban-Rural Nexus
- Hong Kong and the Pearl River Delta at the Cross Road
- Space-time Behavior and Planning in Urban China
- Rethinking Urban Transformations from the Perspective of Geography in an Urban Era
- Developmental Dilemma in the Third World Cities
- New Technology and Sustainable City Development
- Urbanization, Global Environment Change and City Sustainability
- Urban Climate and Urban Planning
- Urban and Regional Planning
- Land Use and Urban Environments
- Demographic Change and Migration
- Risk and Vulnerability Analysis and Urban Safety
- Urban Transport Geography: Transitions to Sustainable Mobility
- Land System Dynamics and Regional Sustainable Development

ENVIRONMENT-HEALTH AND WELFARE

- Natural disasters and vulnerable spaces, resilience, coping and adaptation in South Asia
- Women's health and wellbeing: An Indian perspective
- Environmental pollution and monitoring
- Human health and wellbeing
- Public services and social welfare
- Resource efficiency and equity
- Water Allocation as a Result and Its Impact on the Human-Nature Interaction in Northwest China
- Spatially Integrated Humanities and Social Sciences
- Environmental, Socio-economic and Climatic Changes in Northern Eurasia and Their Feedbacks to the Global Earth System and Society

GEOGRAPHY IN DIFFERENT CULTURES

- Cultural Tourism in Saudi Arabia
- Resource Peripheries and Ethical Value Chains - Structural Challenges In Moving Beyond the Curse
- Mobility of China Model
- The "Supermarketocracy" - Multilocal, Multinational, Multifunctional, Multichannel
- Chinese Culture and Geography
- Geography in Chinese Social-Economic Development
- Development of Geography in the West
- Geographic Perspectives and Approaches

CALL FOR PAPERS & POSTERS

CALL 1: PAPER SESSIONS BY THE COMMISSIONS AND TASK FORCES

Submission of papers is possible for some of the sessions organized by the IGU Commissions and Task Forces between 15 September 2015 and 15 February 2016. An overview of those sessions with an open call for papers is available on the IGC 2016 website. All applicants will be informed of the outcome of their paper submission before 15 April 2016.

CALL 2: PAPER SESSIONS ON THE FIVE KEY TOPICS

Papers for the sessions organized under the five key topics can be submitted between 15 September 2015 and 15 February 2016. Papers have to be submitted via the IGC 2016 website and will be reviewed by the session chairs. All applicants will be informed before 15 April 2016 whether their paper has been accepted.

CALL FOR POSTERS

Posters can be submitted from 15 September 2015 until 15 February 2016 via the IGC 2016 website. If your submission is selected, the file that you uploaded at the submitting time will be printed with an IGC 2016 header and your contact details. Posters will be displayed on-site at the conference and poster information will be available online.

FORUM

- Forum on Inheritance and Innovation of Geography: Young Scholars in Action - : 1. Global Change and Geographic Research 2. Environment Ecological and Climate Change 3. the Harmonious Development of Man-land Relationship – Organized by Institute of Geographic Sciences and Natural Resources Research, CAS
- Forum on Development of Geography and Geographical Societies of Asia
- The International Dean/ Chair's Forum on Geography Education – Organized by School of Geography and Planning, Sun Yat-sen University
- Area Development and Policy – Organized by RSA

SYMPOSIA

- Interactions Between Geomorphic Processes and Human Activities and Geographical Aspects in Geoarchaeology - Sponsored by IAG
- Future Mountain Development

- Comparative Study of Danxia Landform Between Different Countries – Organized by Red Beds and Danxia Geomorphology Working Group of IAG& World Heritage Protection Committee of Danxia Landform
- Round Table on Arctic – Organized by Russian National Committee of the IGU
- Symposium on W.K. Clifford’s Geometric Algebra and Geographical Information Science: Development and Applications (GAGIS) - Organized by Department of Geography, Nanjing Normal University
- Symposium organized by Xinjiang Institute of Ecology and Geography, CAS
- Public Lecture - Organized by International Journal of Urban and Regional Research (IJURR)

WORKSHOPS

There are several categories of workshops to be held at the IGC 2016. Technical workshops allow companies such as ESRI and SuperMap to introduce their latest techniques and products applicable in geography and related fields; Training workshops include instructive lectures on Spatial Statistical Methods for Modeling Geo-referenced Data, Big Data Analysis and Study Cases, Open Sources Software: Computation and Visualisation, Spatial Decisions Using GIS and Remote Sensing etc. Workshops working as a window on China will introduce Chinese geography-related national policies, including One Belt, One Road initiative, Eco-Civilization, as well as current environmental state and law-based environmental governance in China, etc.

SOCIAL EVENTS AND SCIENTIFIC FIELD EXCURSIONS

SOCIAL EVENTS

The opening ceremony will be taking place on the morning, 22 August following a relaxing welcome reception held the day before. On the 23rd August, the conference banquet will provide you an excellent opportunity to develop a friendship with other attendees. On the afternoon of 25 August, the formal closing ceremony will happen and an informal get-together will prolong it near the congress venue. In addition, a broad range of visits and multicultural events will be exclusively arranged for the participants of the IGC 2016.

SCIENTIFIC FIELD EXCURSIONS

The post-conference excursions are still to be decided. Please consult the website for updated information.

REGISTRATION

FULL REGISTRATION

	Early Registration fees before 15 April, 2016	Regular Registration fees 15 April – 15 July, 2016	Late Registration fees after 15 July, 2016
• Participant	• 400 USD	• 460 USD	• 520 USD
• Student	• 200 USD	• 230 USD	• 260 USD
• Accompanying Person	• 150 USD	• 150 USD	• 150 USD

DAY REGISTRATION

	Cost/Day before 15 April, 2016	Cost/Day 15 April– 15 July, 2016	Cost/Day after 15 July, 2016
• Participant	• 150 USD	• 180 USD	• 210 USD
• Student	• 75 USD	• 90 USD	• 105 USD

Registration fees and conference dinner costs quoted include the Tax.

NOTES:

- The student rates are available only to full time students enrolled in a recognized higher education course at university. Non-compliant delegates will be charged the applicable full registration rate.
- The accompanying person(s) rate is intended for spouses or other relatives of participants registered in any of the other categories. Accompanying person registered in this category may not present papers or posters.

The Registration fee includes:

●**Full Registration includes:** attendance to all Scientific Meeting, lunches, tea breaks, abstracts of Congress papers and Welcome Reception

●**Student registration includes:** attendance to all Scientific Meeting, lunches, tea breaks, abstracts of Congress papers and Welcome Reception. If you registered as a student, please attend the Congress with your student ID.

●**One day registration includes:** attendance to Scientific Meeting, tea breaks and one lunch for the selected day, abstracts of Congress papers.

●**Accompanying adult registration includes:** Welcome Reception, Exhibition Access, Opening and Closing Ceremony, as well as Social Events organized during the Congress

CANCELLATION POLICY

If notice of cancellation of registration is received before 15 May, 2016, a cancellation fee of 50 USD will be deducted from the refund;

From 15 May to 15 July, a refund less a cancellation charge of 50% of the total cost shall be paid;

No refunds will be made after 16 July, 2016.

Conference Dinner

We will organize a conference dinner on 23rd August, which charged for 80 USD/person. Please pay it together with your registration fee, if you would like to attend.

The on-line registration has opened from 15 September, 2015.

GENERAL INFORMATION AND ACCOMODATION

CONGRESS VENUE: CHINA NATIONAL CONVENTION CENTER (CNCC)



Capturing the heart precinct of Beijing Olympic Green, China National Convention Center is right next to the Bird Nest (China National Stadium for the Olympics opening and closing ceremony), the Water Cube (National Aquatics Center) and National Indoor Stadium. CNCC complex consists of the Convention Center, CNCC Grand Hotel, InterContinental Hotel and two office buildings. The Center itself is 398m long, 148m wide, 42m high and it has eight floors and two more in the basement with a shopping mall inside.

CNCC is China's most versatile international conference venue ideal for congresses, meetings, exhibitions, banquets, product launches, corporate annual dinners, etc. CNCC's center-piece is its nearly 100 meeting rooms of various sizes equipped with the most advanced AV facilities. The 6,400 sqm plenary hall is able to cater to 6,000 delegates, the 4,860 sqm ballroom is suitable for 3,000 pax banquets.



China National Convention Center
No.7 Tianchen East Road, Olympic
Green, Chaoyang District, Beijing
100105

国家会议中心
北京市朝阳区奥林匹克公园北辰东路7号

CNCC Grand Hotel
Building 1, No.8 Precincts,
Beichen West Road, Chaoyang
District, Beijing 100105, China

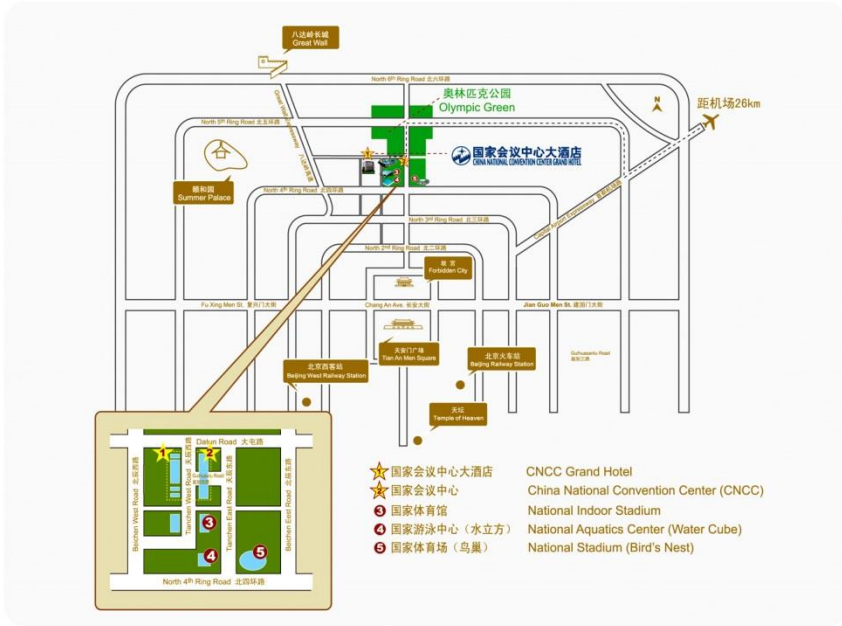
国家会议中心大酒店
北京市朝阳区北辰西路8号院1号楼

电话/Tel. (86 10) 8437 2008
(86 10) 8437 3300
传真/Fax. (86 10) 8437 0387
www.cnccgrandhotel.com
www.cnccchina.com

You can show the information to
the taxi driver to take you to the
hotel.

如您选择乘坐出租车，请将以下下车
路线出示给司机：

1. 沿首都机场高速一直到北四环，亚运村方向出口
2. 沿四环主路向西，过安慧桥后出主路至北四环中路辅路
3. 沿北四环中路辅路走约1公里，在北辰西路下右转至北辰西路
4. 沿北辰西路北行至大屯路口辅路右转既是国家会议中心大酒店大堂



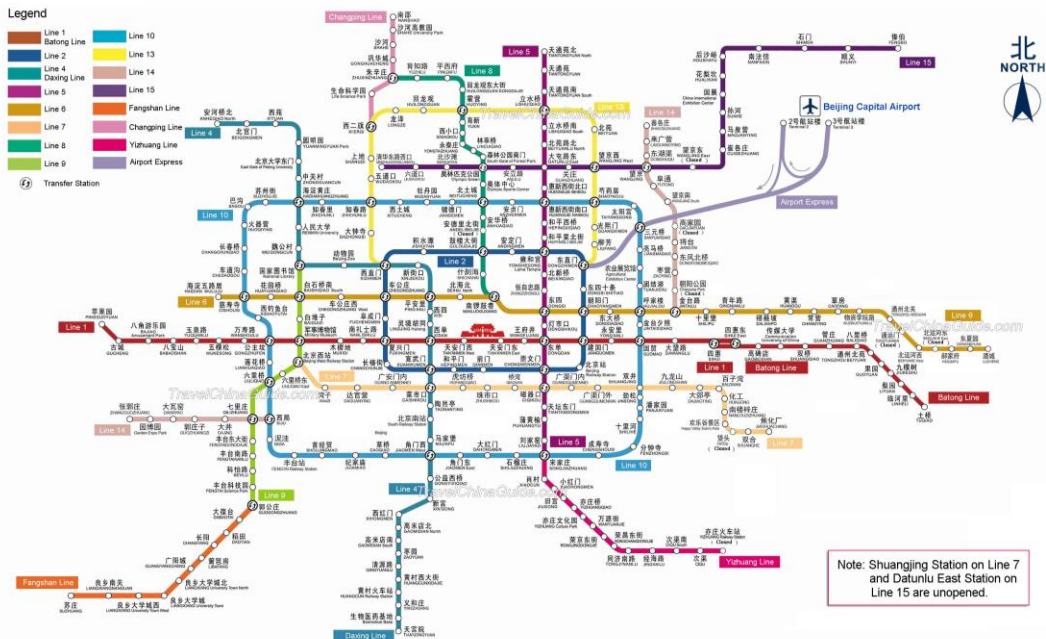
- ★ 国家会议中心大酒店 CNCC Grand Hotel
- ★ 国家会议中心 China National Convention Center (CNCC)
- ③ 国家体育馆 National Indoor Stadium
- ④ 国家游泳中心（水立方） National Aquatics Center (Water Cube)
- ⑤ 国家体育场（鸟巢） National Stadium (Bird's Nest)

请带我去 国家会议中心 国家会议中心大酒店
Please take me to: CNCC CNCC Grand Hotel

BEIJING TRANSPORT

• Subway

Beijing's Subway has 15 lines. Trains run from 05:30 in the morning until 23:00 in the late evening. A ticket can be bought at the ticket office at each station or at an automatic ticketing machine. Subway stops are announced over the train's speaker system in Chinese and English.



- **Buses**

City public buses run from 5:30 till 23:00 daily. Taking buses in Beijing is cheap, but less comfortable than a taxi or the subway. The flat rate for a tram or ordinary public bus is 2 yuan. Buses equipped with air-conditioning or of a special line are charged according to the distance. Few foreigners like getting around by bus, because it is always crowded, especially during rush hours (6:30-9:00 and 17:00-19:00). Some recorded announcements give the stop's name in English. Having your destination in Chinese characters will help. When squeezing onto a crowded bus take care of your wallet, etc.

- **Taxis**

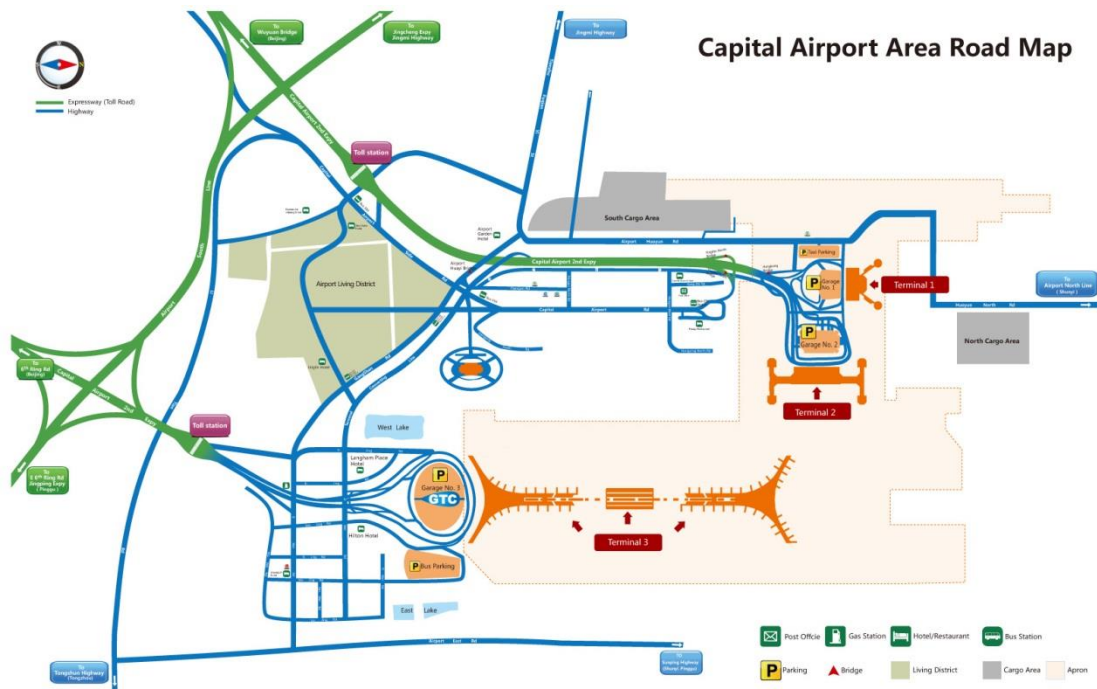
Taxis Though Beijing does suffer from congestion, its taxi drivers will find the fastest way to your destination. Bring the name of your destination in Chinese characters if your spoken Chinese is not good. The cost from the airport to the conference venue is about RMB100-120 enclosed the extra highway fee RMB10. Please do ask for the receipt from the driver.

- **Bicycle**

Bicycle China used to be called the sea of bicycles and in Beijing today the bike is still a convenient vehicle for most people. Renting a bike may be a better way for you to see this city at your own pace. Bikes can be hired from many hotels for 20–30 yuan/day. A deposit will be required. You can also rent bikes at some bicycle shops for repairing bikes and inflating tires. Their charge for renting bikes there is lower as the bikes are not as new. When needed, you park your bike in a bike park, which can be easily identified by the large amount of bikes on roadsides. The charge is about 1 yuan.

- **Airport**

Beijing Capital International Airport is located in northeast of Beijing. It is 25.35 km from the Tiananmen Square, center of Beijing city. It is not only an aviation gateway of Beijing and a window for international communication, but also a radial center for China civil aviation network. More than 5,000 scheduled flights are available to 88 cities in China and 69 cities abroad. The Beijing Capital International Airport is under the administrative control of Civil Aviation Administration of China (CAAC), officially opened on March 2nd, 1958. With the development of civil aviation business and the increasing volume of passenger and cargo transportation, it was expanded in large scale. There are 3 Terminals (T1, T2 and T3).



- **Arrival in Beijing**

Taxi services are available at Beijing Capital International Airport the whole day. The cost from the airport to the meeting venue will be about 100 RMB, which includes an expressway toll of 10 RMB/car. After 23:00, you will pay more. Please do ask for the receipt from the driver. Most drivers can't understand English, so write down your destination in Chinese beforehand.

PASSPORTS AND VISAS

Passports, valid for at least six months from the entry into China, and entry visas are required to visit China, except for those from Japan and Singapore if they stay for less than 15 days. Participants are advised to consult the nearest Chinese diplomatic mission for details. A single entry visa is valid for three months, and can be extended for an additional month at the Foreigners Section of the Local Public Security Bureau if necessary. Once in China, the participants are advised to carry their passports on them at all times because the passports may be needed to check into hotels, book airline tickets, and change money. Visa application should be made preferably at least one month before departure for China.

The Conference Secretariat will send a formal invitation letter with which the participants can apply for a visa at the Chinese diplomatic mission indicated in the invitation. In order to receive the Formal Invitation Letter, you need to fill out the registration form online and pay the registration fee at your earliest time.

Alternatively, participants may ask their travel agents to arrange their travel to China and obtain a tourist visa irrespective of whether or not they have registered with the Conference Secretariat.

If participants have any difficulties in obtaining their visa, they should contact the Conference Secretariat.

WEATHER

August in Beijing is still very hot. The average high temperature is 29.09°C(84.35°F) and the average low is 19.78°C(67.61°F). It has almost as much rain as July, Beijing's wettest month, but still only a moderate amount (160 mm or 6 inches). There are occasional thunderstorms, so bring an umbrella.

INSURANCE

The registration fee does not include insurance for the participants regarding accidents, sickness or loss of personal property. It is advisable that participants make their own arrangements in respect of health and travel insurance before leaving their countries.

EMERGENCY

Emergency call numbers are 110 for police, 119 for fire, 120 for rescue and 122 for traffic accident.

CURRENCY EXCHANGE

In China, only RMB is used. However, exchange centers can be found at airports, most hotels and large shopping centers. The exchange rate is due to the official rate (Bank of China). When exchanging money, please keep your receipt by which you can change any remaining RMB back to foreign currency when leaving China. Visa, Master, American Express, Diners Club and JCB are accepted in many department stores and hotels. Some ATMs may be able to allow you to withdraw RMB on your credit cards.

The Bank of China and most hotels can cash travelers' cheque issued by any foreign bank or financial institution. Participants will need to show a passport and pay a 0.75 percent commission. Travelers' cheque signed over to a third party cannot be cashed in China, but can be presented for collection through the Bank of China.

LOCAL TIME

GMT+8, Beijing Time is the benchmark time for all the regions and cities across the country, which actually covers four geographic time zones.

ELECTRIC POWER



The electric current in China is 220=V, 50 Hz. Most hotels have built-in converters in bathrooms for shavers and hair dryers. Please note that a variety of plug types are used in China, and adaptors may be necessary. Two types of sockets are used in China: three-pin socket (a grounding pin and two flat prongs forming a V-shape) and two-pin socket (two flat

parallel prongs without grounding). Please see the photo attached.

RECONFIRMATION OF AIR TICKET

Departure air ticket (both international and domestic) should be reconfirmed 72 hours in advance. Calling the airline office in Beijing should allow you to confirm flights, but these offices do not work in weekend.

ACCOMADATION

The Organizing Committee has secured accommodation for participants at advantageous rates in the InterContinental Beijing Beichen, China National Convention Center Grand Hotel, Crowne Plaza Park View Wuzhou Beijing, Beijing Continental Grand Hotel, Huiyuan Prime Hotel, Huiyuan Apartment Media Village, Yayuncun Hotel and Best Western OL Stadium Hotel Beijing.

🌸 **China National Convention Center Grand Hotel (★★★★★)**



CNCC Grand Hotel, located in the center of the Beijing Olympic Green and connecting with the CNCC (conference venue) by a walkway, is a brand new deluxe international standard hotel with 420 comfortable rooms. It's one of the official hotels accommodating to journalists reporting Beijing 2008 Olympic Games.

Owned by Beijing North Star Group, CNCC Grand Hotel is adjacent to China National Convention Center. With the help of skybridge between the Hotel and the Center, it takes only 3 minutes to walk to the Center. The Hotel is also within walking distance to the Bird Nest (China National Stadium), the Water Cube (National Aquatics Center) and the State Indoor Stadium all of which are key Olympic venues.

CNCC Grand Hotel has 420 beautifully appointed guest rooms and suites, each with each with a spacious atmosphere and contemporary design. All rooms have broadband internet access and are equipped with modern furniture, quality sleep and bath amenities. We offer our guests all of the tools necessary to help create an optimal sleep experience.



To IGC venue (CNCC): 0.8 KM, 10 minutes by walk

🌸 **InterContinental Beijing Beichen (★★★★★)**



The InterContinental Beijing Beichen is located in the core area of Olympic Village. The hotel has 337 rooms, business center, high-quality sound system, interactive TV, a 24-hour technical assistance. Rooms are equipped with telephone voice mail and broadband network system. It offers a unique restaurant, Ruyi Xiu Italian



restaurant; pubs and coffee Yang cafe, providing all-day Zero International delicacies, with a full range of banquet and conference services, along with a grand ballroom and 9 multi-purpose conference rooms.

To IGC venue (CNCC): 0.5 KM, 10 minutes by walk

Best Western OL Stadium Hotel Beijing (★★★★)



Best Western OL Stadium hotel is a full-service Best Western branded hotel in Beijing. It is ideally located in the 2008 Olympic village, close to the prestigious landmarks of the Chao Yang District. On the Eastern side of the hotel is the China National Convention Center, affectionately known to many as National Stadium ('The Bird's Nest') and the Water-Cube.

The hotel features 430 uniquely designed rooms inclusive of high-speed broadband Internet access points, Pay-per-view movies, an electronic safe box for storage of valuables. Outside of the rooms, the hotel offers many facilities such as meeting rooms, the business centre, translation services and an airline ticket office to caters for the needs of business guests.

To IGC venue (CNCC): 2.2 KM, 10 minutes by taxi

V-Continental Beijing Park View Wuzhou (★★★★★)



V-Continental Beijing Park View Wuzhou is a five-star luxury hotel located in the northern part of Beijing and within walking distance of the area for the 2008 Olympic Games. It has 478 standard rooms and 75 luxury suites, all equipped with complete facilities. V-Continental Beijing Park View Wuzhou offers a well-equipped Health Club, with an indoor heated swimming pool, fitness centre, sauna, steam bath and massage treatments. Internet access is also provided at a cost. The hotel is only a 25-minute drive from Beijing Capital International Airport.

To IGC venue (CNCC): 3 KM, 10 minutes by taxi

Beijing Continental Grand Hotel (★★★★)

Beijing Continental Grand Hotel is designed as a special four-star hotel, It has 500 standard rooms and various suites as well as quite a few restaurants. It also offers services including foreign currency exchange, shopping arcade, airline ticket sales, beauty salon, massage, sauna, fax, typing, photocopying, laundry. Internet



access is also provided at a cost. Reservation should be made directly at the hotel's website.

Location: In the flourishing Asian Olympic Village area, on the North Fourth Ring road, along the Capital Axis line, next to the the Bird's Nest(Beijing National Stadium), the Water Cube9 (Aquatic Center). Add: No.8 Beichen Dong Road, Chaoyang District, Beijing P. R. China 100101

To IGC venue (CNCC): 3 KM, 10 minutes by taxi

 **Yayuncun Hotel (★★★)**

Yayuncun Hotel is located within famous Asian Games Village, neighboring center of Olympic Games and few steps away from the Bird Nest. Also is next to Huiyuan Prime Hotel and is about 15-minute walk away from the Conference venue. The hotel has A, B and C three buildings, with totally 500 rooms. Free internet access will be included.

To IGC venue (CNCC): 2.3 KM, 10 minutes by taxi

Surrounding the China National Convention Center, there are also various types of hotels available, such as Grand Skylight CATIC Hotel Beijing, Celebrity International Grand Hotel & the National Jade Hotel.

IMPORTANT DATES

The 33rd International Geographical Congress in Beijing, China: 21-25 Aug, 2016

Call for abstracts/papers:

15 Sep. 2015 - 15 Feb. 2016

Evaluation of abstracts/papers by session chairperson(s):

15 Feb. 2016 - 15 Apr. 2016

Registration:

15 Sep. 2015 - 15 Apr. 2016 for early registration

16 Apr. 2016 - 15 Jul. 2016 for regular registration

After 15 Jul. 2016 for late registration

LOCAL ORGNISING COMMITTEE

Chairmen

Professor Yanhua LIU, Former President of GSC, Counselor of the State Council, China

Academician Bojie FU, President of GSC

Secretaries General

Academician Chenghu ZHOU, Vice-President of IGU

Professor Yi LIU, Vice-President of GSC

LOCAL SCIENTIFIC COMMITTEE

Chairman

Academician Dahe QIN, Former Vice-President of IGU, Chairman of Academic Committee of CAS

CONTACTS

IGC 2016 Organizing Committee

The Geographical Society of China

11A Datun Road, Chaoyang District, Beijing, 100101

P. R. China

Tel.: +86-10-64870663, 64889598

Fax: +86-10-64889598

Email: igc2016@igsnr.ac.cn

Web Site Address

<http://www.igc2016.org>